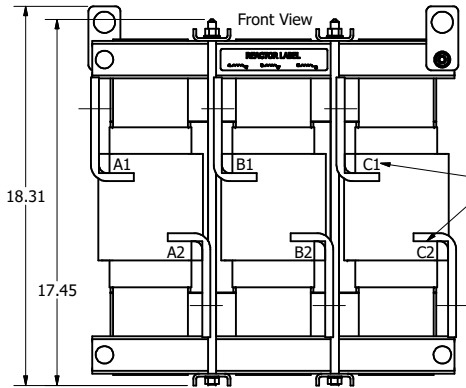


480 Rated Voltage, 600 Max Voltage, High Z, Impedance.							
Part Number	Horsepower (HP)	Motor Amps (A)	Maximum Amps (A)	Inductance (uH)	Weight (LBS)	Available Lug Kit	Terminal Hole Size (Inches)
KDRX2H	800	960	965	32.5	305	SLK16	0.53

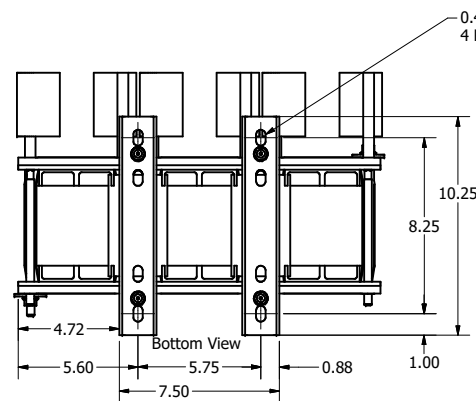
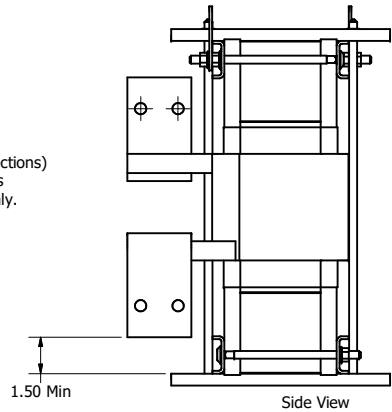
480 Rated Voltage, 600 Max Voltage, Low Z, Impedance.							
Part Number	Horsepower (HP)	Motor Amps (A)	Maximum Amps (A)	Inductance (uH)	Weight (LBS)	Available Lug Kit	Terminal Hole Size (Inches)
KDRX2L	800	960	965	19.5	280	SLK16	0.53

575 Rated Voltage, 600 Max Voltage, High Z, Impedance.							
Part Number	Horsepower (HP)	Motor Amps (A)	Maximum Amps (A)	Inductance (uH)	Weight (LBS)	Available Lug Kit	Terminal Hole Size (Inches)
KDRX44H	800	768	864	49.8	310	SLK16	0.53

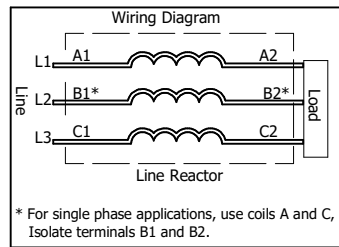
575 Rated Voltage, 600 Max Voltage, Low Z, Impedance.							
Part Number	Horsepower (HP)	Motor Amps (A)	Maximum Amps (A)	Inductance (uH)	Weight (LBS)	Available Lug Kit	Terminal Hole Size (Inches)
KDRX41L	900	864	900	26.6	280	SLK16	0.53
KDRX42L	1000	960	1000	23.9	280	SLK16	0.53



(Customer Connections) Markings On Coils For Reference Only.



0.44 Wide x 0.75 Long Slots 4 Places.



TCL (800) 824-8282 transcoll.com

TCL, LLC
Germanstown, WI, USA
transcoll.com
800-824-8282

KDRUL Drive Reactor
KDR- Motor Amps ---
3PH, 50/60Hz, ---V Rated, 600V Max, -A Max
40C Amb Max, 155C Rise, RoHS
Manual #30896 LUG KIT #SLK16

UL LISTED CE

DATE CODE A1 A2 B1 B2 C1 C2

- Notes:
1. KDR Lug Kits sold separately. Contact TCL.
 2. For KDRUL Version With Terminal Lugs Attached, See Sheet 2
 3. UL file number: cULus Listed File E116124.
 4. KDR Drive Reactors Comply With The Thermal and Altitude Standards Set Forth by NEMA ST20-1992.
 5. KDR IOM Manual Part Number 30895
 6. NEC Current For 208/240 Volts, Horsepower Based On 208 Volts.
 7. Material(s) Shall be RoHS Compliant
 8. Customer Is Responsible For Installation To Meet All National And Local Electrical Codes.

THE INFORMATION AND DESIGNS CONTAINED IN THIS DRAWING ARE CONFIDENTIAL AND THE PROPRIETARY PROPERTY OF ALLIED MOTION TECHNOLOGIES INC. AND ITS SUBSIDIARIES. NEITHER THIS DESIGN NOR ANY INFORMATION CONTAINED IN THIS DRAWING MAY BE REPRODUCED OR DISCLOSED TO OTHERS WITHOUT THE EXPRESS WRITTEN CONSENT OF ALLIED MOTION TECHNOLOGIES INC. AND ITS SUBSIDIARIES.				TOLERANCES (EXCEPT AS NOTED) DECIMAL .XX ± .25 .XXX ± .10				WI132N10611 (Rev 1) 1/16 Germanstown, WI 53022 © 2021 TCL, LLC An Official Motors Company KDR X Frame Copper Bus Reactor Drawing	
B	5796>Title blk updated.chg lift ring sides	12/8/2021	DSW	FRACTIONAL ± 1/16	DRN BY DSW	DATE 3/5/2018	107539-1DG		
A	Combined drawings	3/5/2018	DSW	ANGULAR ± 1°	SCALE 1:4.5	DRWN DSW	SHT 1 OF 6		
NO	REVISION	DATE	BY						